



UNIVERSITY OF
TORONTO

ENROLMENT REPORT 2009-10
ACTUAL AND PROJECTED ENROLMENT

February 2010
(Revised April 2010)

Vice Provost Academic Operations

ENROLMENT REPORT 2009-10

ACTUAL AND PROJECTED ENROLMENTS

A. Preamble

The Enrolment Report provides information for two purposes: it reports 2009-10 enrolments in various programs across the University, comparing actual results to enrolment plans; and it also lays out the enrolment projections for the period 2010-11 through to 2014-15. These projections form the basis for the revenue projections underlying the University's Long Range Budget Guidelines and the Budget Report.

B. Background

Enrolment planning has evolved significantly over the last two decades. In the late 1980s and 1990s it focused primarily on positioning the University's enrolment level within a funded enrolment "corridor" negotiated with the Ontario Government.

The Ontario Government negotiated enrolment funding levels for base operating grant with the Ontario Universities in 1989. This established a "corridor mid-point" for the University of Toronto that the University reached in 1990-91. At that point the University had the flexibility to allow its enrolment (expressed in BIUs) to fluctuate within a corridor of $\pm 3\%$ of its mid-point with no effect on the operating grant it received. The University's enrolment planning for 1992-93 through 1995-96 took advantage of this flexibility by reducing enrolment while remaining within its corridor, thereby increasing the funding per FTE.

Over the past decade the University participated in several programs to increase enrolment levels beyond those defined in the corridor. In the late 1990s the Government introduced a series of targeted funding envelopes, which allowed the University to grow in the areas of BEd, MD, computer science and high-demand engineering (ATOP). In 2000-01, the Ontario Government engaged in discussions with the Ontario universities regarding enrolment expansion to meet the demands of the "double-cohort". Full average funding for eligible undergraduate growth over 2000-01 levels was provided between 2000-01 and 2004-05. Since then the Ontario university system has faced discounted funding on undergraduate growth. Funding for growth over 2004-05 is made available through the Undergraduate Accessibility envelope. In each of the last two years the shortfall has been met with one-time-only funds from the Province. In 2009-10 the system faces a \$100M (44%) shortfall. The Council of Ontario Universities is advocating strongly for a provincial commitment to full funding of all undergraduate students.

Funding was provided to support limited graduate growth between 2000-01 and 2004-05. In May of 2005, the Ontario Budget allocated \$220M for a major initiative to expand graduate enrolment in the Province by 14,000 students over 2002-03 levels. This initiative presented an excellent opportunity for the University of Toronto to restore graduate/undergraduate mix and strengthen its research enterprise. In 2008 the Province

announced revisions to the graduate expansion program, bringing the total planned number of expansion spaces to 15,300.

Section C below provides enrolment details for 2009-10, with comparisons of actual enrolments to initial plans. It also provides some data on enrolment history. Projections based on current University plans are given in Section D.

Overall, the data presented in the following sections show that the University's recruitment and enrolment management strategies are enabling us to achieve our enrolment plans.

C. 2009-10 Enrolment: Overview

Table 1A provides overall headcount statistics from 2002-03 to 2014-15. There were 77,343 undergraduate and graduate students enrolled at the University of Toronto in Fall 2009, an increase of 2,422 students over 2008-09.

Full-time-equivalent (FTE) numbers are provided in Table 1B, which includes a breakdown of undergraduate Arts & Science FTEs by field of study. Because many students graduate with specialists and/or majors in more than one field, this breakdown should not be viewed as a precise accounting. It is only indicative of broad trends.

Table 1B shows graduate professional masters FTEs by campus. Doctoral stream masters and PhD enrolments are totals across the three campuses. They are not displayed by campus because of the unitary administrative structure for these degree programs.

The University's enrolment history since 1973 is illustrated in Chart 1. Over this period, enrolment has more than doubled, from 32,036 to 65,402 FTEs.

C.1.1. Undergraduate Enrolment: 2009-10

Undergraduate enrolment by division is given in Table 2A. In the first five years of the decade significant expansion took place while a much more modest increase has occurred since then, bringing the total student FTEs to 52,715 in 2009-10.

Student enrolment in 2009-10 is 809 FTEs (1.6%) above target. The number of undergraduate students in Arts & Science increased on all three campuses as did the number of remaining first-entry and professional undergraduate programs.

A significant number of students benefit from collaboration between the University of Toronto and other institutions. Table 2B shows that 1,972 (3.7%) of the University's undergraduate FTEs study in programs offered jointly with external or affiliated institutions. In addition, 759 students came to the University of Toronto after studying at an Ontario College of Applied Arts and Technology.

The new Physician Assistant Program in collaboration with the Michener Institute and the Northern Ontario School of Medicine (NOSM) commenced in January 2010, and will be included in the Fall FTE projections from 2010-11 onwards.

Statistics for full-time new intake are provided in Table 3. New intake has increased across all programs. Actual overall intake was 500 over planned levels.

Chart 2 shows the average grade for entering students in Arts & Science at the three campuses from 2005 to 2009. The average grade of the 2009-10 incoming class is 83.6%, which is a slight increase over each of the past three years at 83.2%. Despite the significant increase since the double cohort (Table 3), the University has maintained the quality of its undergraduate Arts & Science student body.

C.1.2 Graduate Enrolment: 2009-10

Information on graduate student enrolment is contained in Tables 4A-H. As part of the 2005 Spring Budget, the Ontario Government announced that by 2009-10 an additional \$220M would be made available to expand graduate enrolment in Ontario universities. This funding was intended to support a system-wide growth of 14,000 graduate spaces over 2002-03 levels. Initially, 12,000 spaces were allocated in June 2006 for expansion to be achieved by 2007-08.

The Provincial program presented an excellent opportunity for the University of Toronto to increase the number of graduate students and strengthen its research enterprise. The University undertook an extensive planning process, the results of which are described in a document entitled *A Framework for Graduate Expansion 2004-05 to 2009-10*. These plans were approved by Governing Council on December 14, 2006.

In Phase 1, the University of Toronto received approval from the Ministry to increase enrolment by up to 2,134 eligible domestic student FTEs by 2007-08 relative to 2004-05 (Table 4G). The expansion envisioned in the Framework document was based on this allocation and on the University's academic plans at that time as developed by the heads of various graduate units.

Phase 2 was announced in February 2009. The University was allocated 2,722 spaces relative to 2004-05, comprised of 1,709 Masters and 1,013 PhDs. It was also announced that funding will be phased-in to 2011-12 with an additional two years, if necessary, to achieve the end-state targets.

Subsequent to the Phase 2 allocations and in response to increased Master's demand, especially Professional Masters, the University continued to advocate to the Ministry for increased flexibility or "fungibility" between the Masters and PhD pools. After a mid-program review of the graduate expansion initiative, the Ministry announced in December 2009 that it would provide a one-time opportunity for institutions to convert up to 50% of their remaining spaces that had yet to be realized as of 2007-08 between the two pools on a grant-neutral basis. The University of Toronto received permission to convert 262 PhD spaces to 500 additional Master's spaces. End-state targets are now 7,031 Masters and 3,853 PhDs, which represents growth relative to 2004-05 of 2,209 Masters and 750 PhDs (Table 4G). Table 4H provides the detailed breakdowns by faculty and funding pool.

Table 4A shows planned enrolments for 2009-10 as well as actual and projected enrolments for domestic and international students to 2014-15. A breakdown by degree category is given in Table 4B.

Overall graduate enrolment reached 13,466 FTEs in 2009-10, an increase of 549 FTEs, or 4.2%, over 2008-09. Table 4G shows that 10,365 FTEs are eligible for funding in 2009-

10, representing an increase of 2,440 spaces relative to 2004-05. Table 4H shows that the University is currently 282 eligible FTEs below its approved allocation, comprised of 30 Masters above and 312 PhDs below the respective targets. The corresponding increase relative to 2002-03 is 2,860 eligible FTEs, which will be the basis for determining the amount of capital funding to be received from the government.

Detailed FTE enrolment breakdowns by faculty and degree are provided in Tables 4C-4F, including the planned targets for 2010-11 and beyond.

Chart 3 illustrates changes in graduate enrolment for different degree categories. Since 1997-98, enrolment in graduate professional masters programs has more than doubled (150% increase), and doctoral enrolment has grown by 47%. At the same time, doctoral-stream Masters enrolment has increased by 12%.

C.1.3 Geographic Origin of Incoming Students: 2009-10

Tables 5-9 address the geographic origin of incoming students. The composition of the student body by geographic origin and how it has changed since 2004-05 is given in Table 5A and Charts 4A & 4B. The table shows that a large proportion of incoming undergraduate students, 66% in 2009-10, come from the Greater Toronto Area. Another 10% are from other areas in Ontario, 6% from other provinces in Canada and the remaining 18% from other countries. Of the incoming class of graduate students 57% is drawn from the GTA, 17% are from other areas in Ontario, 12% from other provinces in Canada, and 14% from other countries. Table 5B shows the Faculty/campus details.

C.1.4 International Enrolment: 2009-10

International enrolment statistics are summarized in Table 6 and Charts 5A & 5B. The number of international students has been growing steadily since 1997-98 when they represented only 3.8% of the total student population. Today, 11.2% of the University of Toronto's students come from outside Canada. International students represent 11.1% of the undergraduate population and 11.4% of graduate students.

Table 7 shows trends in full-time intake. The total number of international students admitted has been steadily increasing, but there are significant year-to-year fluctuations in percentage increases because the numbers are small. Also, intake statistics are influenced by international events and changes in government funding.

In 2009-10, total international intake increased by 1.1% relative to the previous year, with a decrease of 13.4% in graduate and an increase of 5.4% in undergraduate admissions. The decline in graduate intake compared to 2006-07 levels is largely attributable to the current emphasis on graduate domestic enrolment expansion for which full government funding is available.

Table 8 and Chart 6 illustrate the distribution of international students by geographic region. The University draws most of its international students from Asia and the Americas.

Table 9 displays international student enrolments by country of citizenship, focusing on the top fifteen countries. The top countries for undergraduate students are China (35%), South Korea (11%), United States (5%) and India (4%). For graduate students, the top

countries are the United States (22%), China (16%), India (9%) and Iran (8%). International undergraduate students came from 147 countries while international graduate students came from 111 countries.

D. Projected Enrolment: 2010-11 to 2014-15

D.1.1 Projected Undergraduate Enrolment

Table 1B gives projected enrolments over the next five years. The University's plan is to decrease its undergraduate enrolment by 271 FTEs, reaching 52,444 FTEs by 2014-15. This is a result of reductions of 411 in Arts & Science at St. George and 22 at UTSC, offset by increases of 698 at UTM. Applied Science is projected to reduce its undergraduate enrolment level by 638 FTEs as part of a plan to rebalance its undergraduate/graduate mix. The number of students in professional faculties is projected to increase by 76 FTEs to 7,773 FTEs. There are no significant planned intake changes in most undergraduate professional programs (Table 3).

By 2014-15, St. George Arts & Science intake will decrease to 5,299 full-time students, in accordance with recently updated plans. Intake at UTSC will be maintained at 2,484 full-time students per annum while UTM plans to admit 2,852 full-time students, 82 more than the 2009-10 intake. Although UTSC has completed an academic planning process, its enrolment projections will not be updated until the outcome of the future Ministry capital funding processes are known.

D.2.1 Projected Graduate Enrolment

The University's December 2006 *Framework for Graduate Expansion* envisioned an increase of 4,400 students relative to 2002-03, conditional on the availability of resources, including operating grant funding, capital funding and scholarships for student support. The enrolment projections in Tables 4A-4H have been updated to reflect the most recent review of divisional plans by the Provost.

Projections to 2014-15 (Tables 4A-4F) show that total FTE growth including international students is expected to continue to occur in the professional masters and doctoral categories. The rapid growth in Professional Masters enrolments reflects the rising importance of these programs and the increased number of offerings at the University. The increase in doctoral students is indicative of the growing intensity of research and scholarship.

The University will continue to monitor funding availability to ensure that the quality of the graduate student experience is not affected due to lack of funding. Further adjustments to long-term enrolment plans will be made as necessary in order to ensure the above institutional end-state targets are met. The University and other institutions will continue advocacy efforts for the funding of a future Phase 3 of graduate enrolment expansion.

D. 3. Projected Undergraduate/Graduate Enrolment Balance

Chart 7 illustrates how the changes in enrolment described above affect the institutional enrolment balance between undergraduate and graduate programs. In 1997-98, undergraduate enrolment represented 80% of the total student body, rising slowly as the double cohort progressed towards graduation, and dropping back to 80% in 2009-10 as a result of graduate expansion. Graduate students are projected to increase to 21.7% of the student population over the next five years.

D. 4. Projected Domestic/International Mix

Table 10 shows actual and planned enrolments for domestic and international students. Total undergraduate student FTEs are projected to decrease by 271 by 2014-15 relative to 2009-10. This is comprised of a planned decrease of 1,278 domestic students and an increase of 1,007 international students. Graduate student growth is planned to be primarily domestic, with a modest growth of 147 FTEs in international students. Overall international enrolment will increase from 11.7% of the total FTE student population in 2009-10 to 13.3% by 2014-15.

D. 5. Longer-term Enrolment Planning and Demand

In June 2007, the President initiated a visioning exercise to develop long-term plans for the Year 2030. Five task forces were established to examine all aspects of the University, including long-term enrolment patterns. Their deliberations extended into the spring of 2008 and the resulting reports informed and guided a *Synthesis Report* prepared by the President. The process then culminated in *Towards 2030: A Long-Term Planning Framework* which identified strategic directions for the University of Toronto based on the *Synthesis Report*.

The *Framework* will help guide future academic planning at the institutional, divisional, and departmental levels. Following are some excerpts from the *Framework* in the areas of enrolment planning, institutional balance, and student recruitment.

- No enrolment decisions will be taken without careful consideration of the long-term implications for the University's self-defined role and aspirations. Enrolment planning will also consider all relevant financial implications and potential impacts on both the quality of the student experience and the quality of working life for faculty and staff.
- The University's enrolment strategies will reinforce its unique strengths in research and scholarship, as well as our acknowledged leadership position in graduate and second-entry professional education provincially and nationally.
- The University will support the continued development of three differentiated campuses under a single University-wide administration.
- The University will focus on the re-development and enhancement of its three primary campuses and will not develop a fourth campus or major satellite operations.

- The University acknowledges the goal of modest reductions in undergraduate enrolment on the St. George campus, along with continued growth in graduate education.
- The University acknowledges that UTM and UTSC envisage growth in a range of professional masters programs, along with doctoral stream expansion in selected disciplines ... For undergraduate enrolment, the presumptive expansion across the two campuses combined is approximately 5000 places for students.
- The University affirms the importance of increasing its national and global presence by recruiting, respectively, more students from outside of the Toronto region and more students from abroad. These general goals ... will be balanced against the University's regional and provincial responsibilities.

Concluding Remarks

The University of Toronto continues to attract a large number of very high-quality student applicants, both domestically and internationally, and to meet its enrolment targets. The enrolment report is intended to facilitate comprehensive monitoring of the University's progress towards its objectives.

E. Tables & Charts

E. 1. Tables

Table 1A:	Actual and Projected Enrolment (Total Fall Headcount)
Table 1B:	Actual and Projected Enrolment (Total FTEs) by Campus
Table 2A:	Actual and Projected Enrolment (Undergraduate Fall FTEs)
Table 2B:	Actual and Projected Enrolments with External and Affiliated Institutions
Table 3:	Actual and Projected Enrolment (Fall Full-time Headcount Intakes)
Table 4A:	Graduate Enrolment, FTE Distribution by Immigration Status
Table 4B:	Graduate Enrolment, FTE Distribution by Degree
Table 4C:	Actual and Projected Enrolment (Fall Total Graduate FTEs)
Table 4D:	Actual and Projected Enrolment (Fall Total PMAS FTEs)
Table 4E:	Actual and Projected Enrolment (Fall Total Doctoral-stream Masters FTEs)
Table 4F:	Actual and Projected Enrolment (Fall Total Doctoral-stream Doctoral FTEs)
Table 4G:	Graduate Enrolment, Eligible FTE Enrolments
Table 4H:	Graduate Enrolment, Eligible FTE Enrolments by Division
Table 5A:	Undergraduate and Graduate Intake by Geographic Origin
Table 5B:	Undergraduate and Graduate Intake by Geographic Origin (Fac/campus)
Table 6:	International Enrolment: Total Students
Table 7:	International Enrolment: Full-time Intake
Table 8:	International Student Headcount Enrolment by Geographic Region
Table 9:	International Student Headcount Enrolment by Country of Citizenship
Table 10:	Actual and Projected FTE Enrolments: Domestic/International Mix

E.2. Charts

Chart 1:	Total FTE Enrolment: 1973-74 to 2014-15
Chart 2:	Entering Grade Averages, Arts & Science by Campus
Chart 3:	Graduate Enrolment by Degree: 1997-98 to 2014-15
Chart 4A:	Undergraduate Intake by Geographic Origin: 2004-05 vs. 2009-10
Chart 4B:	Graduate Intake by Geographic Origin: 2004-05 vs. 2009-10
Chart 5A:	Total Enrolment and Proportion of International Enrolment: 1978 to 2009
Chart 5B:	International Enrolment as a Proportion of Total 2009-10
Chart 6:	International Students by Geographic Region 2009-10
Chart 7:	Enrolment Balance: 1997-98 to 2014-15

Table 1A: Total Actual and Projected Headcount Enrolments

Full-Time Headcount	2002-03	2004-05	2008-09	2009-10	2009-10	2009-10	2009-10	2010-11	2011-12	2012-13	2013-14	2014-15
	Actual	Actual	Actual	Plan Jan/09	Actual Nov/09	Variance to Plan	Variance to 2008-09	Plan	Projected			
St George, A&S	19,644	22,243	22,168	22,465	22,856	391	688	23,357	23,405	23,372	22,709	22,338
UTM	6,272	7,952	9,683	10,171	10,156	(15)	473	10,452	10,690	10,869	10,932	10,939
UTSC	5,993	7,891	9,300	9,385	9,454	69	154	9,448	9,378	9,431	9,463	9,485
Total Undergraduate Arts & Science (Note 2)	31,909	38,086	41,151	42,021	42,466	445	1,315	43,257	43,473	43,672	43,104	42,762
Total Undergraduate Other First-Entry	4,647	4,945	5,099	5,162	5,474	312	375	5,386	5,270	5,200	5,001	4,924
Total First-Entry	36,556	43,031	46,250	47,183	47,940	757	1,690	48,643	48,743	48,872	48,105	47,686
Total Undergraduate Professional incl. TST	6,275	6,850	7,664	7,646	7,794	148	130	7,879	7,960	7,829	7,848	7,862
TOTAL UNDERGRADUATE	42,831	49,881	53,914	54,829	55,734	905	1,820	56,522	56,703	56,701	55,953	55,548
Professional Masters	2,453	2,884	4,023	4,413	4,433	20	410	4,611	4,788	4,986	5,132	5,226
Doctoral Stream Masters	2,389	2,469	2,735	2,684	2,661	(23)	(74)	2,699	2,698	2,680	2,680	2,677
Doctoral Stream PHD	4,465	4,734	5,577	5,742	5,757	15	180	5,853	5,955	6,041	6,131	6,108
TOTAL GRADUATE	9,307	10,087	12,335	12,839	12,851	12	516	13,163	13,441	13,707	13,943	14,011
TOTAL FULL-TIME HEADCOUNT	52,138	59,968	66,249	67,668	68,585	917	2,336	69,685	70,144	70,408	69,896	69,559

Part-Time Headcount	2002-03	2004-05	2008-09	2009-10	2009-10	2009-10	2009-10	2010-11	2011-12	2012-13	2013-14	2014-15
	Actual	Actual	Actual	Plan	Actual Nov/09	Variance to Plan	Variance to 2008-09	Plan	Projected			
St George, A&S	3,843	3,686	3,242	3,480	3,192	(288)	(50)	3,480	3,480	3,480	3,480	3,480
UTM	846	842	823	844	891	47	68	844	844	844	844	844
UTSC	769	870	973	975	986	11	13	975	975	975	975	975
Total Undergraduate Arts & Science (Note 2)	5,458	5,398	5,038	5,299	5,069	(230)	31	5,299	5,299	5,299	5,299	5,299
Total Undergraduate Other First-Entry	347	423	891	860	905	45	14	880	900	920	940	960
Total First-Entry	5,805	5,821	5,929	6,159	5,974	(185)	45	6,179	6,199	6,219	6,239	6,259
Total Undergraduate Professional incl. TST (Note 1)	2,589	843	847	862	783	(79)	(64)	830	839	844	844	844
TOTAL UNDERGRADUATE	8,394	6,664	6,776	7,021	6,757	(264)	(19)	7,009	7,038	7,063	7,083	7,103
Professional Masters	2,061	1,807	1,528	1,618	1,636	18	108	1,624	1,613	1,558	1,561	1,548
Doctoral Stream Masters	407	385	289	347	281	(66)	(8)	282	281	284	287	290
Doctoral Stream PHD	109	116	79	68	84	16	5	76	80	83	85	83
TOTAL GRADUATE	2,577	2,308	1,896	2,033	2,001	(32)	105	1,982	1,974	1,925	1,933	1,921
TOTAL PART-TIME HEADCOUNT	10,971	8,972	8,672	9,054	8,758	(296)	86	8,991	9,012	8,988	9,016	9,024

Total Undergraduate	51,225	56,545	60,690	61,850	62,491	641	1,801	63,531	63,741	63,764	63,036	62,651
Total Graduate	11,884	12,395	14,231	14,872	14,852	(20)	621	15,145	15,415	15,632	15,876	15,932
TOTAL HEADCOUNT	63,109	68,940	74,921	76,722	77,343	621	2,422	78,676	79,156	79,396	78,912	78,583

Note 1: Reporting of Additional Qualification enrolments ceased as of 2004-05.

Note 2: Current definition of FT/PT for Arts and Science applied retroactively to 2002-03 to provide consistent time series

Table 1B: Total Actual and Projected FTE Enrolments by Campus

Total UofT FTEs incl. TST (Fall)	2002-03 Actual	%	2004-05 Actual	2008-09 Actual	2009-10 Plan Jan/09	2009-10 Actual Nov/09	%	2009-10 Variance to Plan	2009-10 Variance to 2008-09	2010-11 Plan	2011-12 Projected	2012-13	2013-14	2014-15
Arts & Humanities	6,611	35%	7,276	7,564		7,972	38%		408					
Social Sciences - Excl. BCOM	4,163	22%	4,957	4,411		4,403	21%		(8)					
Social Sciences - BCOM (Yrs 2-4)	885	5%	1,192	1,360		1,446	7%		86					
Life Sciences	2,520	13%	3,271	3,313		2,918	14%		(395)					
Other Sciences	4,543	24%	4,387	3,701		4,316	20%		615					
St George, A&S	18,722	100%	21,082	20,349	20,819	21,054	100%	235	705	21,550	21,589	21,557	20,971	20,642
Arts & Humanities	2,316	41%	2,852	3,167		3,158	35%		(10)					
Social Sciences - Excl. BCOM/BBA	1,685	30%	2,130	2,446		2,712	30%		266					
Social Sciences - BCOM/BBA (Yrs 2-4)	406	7%	584	823		914	10%		91					
Life Sciences	358	6%	500	768		710	8%		(58)					
Other Sciences	891	16%	1,230	1,474		1,588	17%		113					
UTM	5,657	100%	7,295	8,678	9,136	9,081	100%	(55)	403	9,355	9,562	9,718	9,773	9,779
Arts & Humanities	1,409	25%	1,699	1,577		1,673	19%		96					
Social Sciences - Excl. BBA	1,471	26%	2,079	3,054		3,075	36%		22					
Social Sciences - BBA (Yrs 1-4)	792	14%	1,124	1,522		1,566	18%		44					
Life Sciences	608	11%	1,040	1,126		1,084	13%		(43)					
Other Sciences	1,284	23%	1,286	1,138		1,241	14%		104					
UTSC	5,564	100%	7,228	8,417	8,525	8,639	100%	114	222	8,584	8,523	8,569	8,597	8,617
Total Undergraduate Arts & Science	29,942		35,605	37,445	38,480	38,774		294	1,329	39,490	39,674	39,844	39,341	39,038
Total Undergraduate Other First-Entry	4,799		5,105	5,325	5,411	5,816		404	491	5,640	5,521	5,450	5,252	5,178
Total First-Entry	34,741		40,710	42,769	43,891	44,589		698	1,820	45,129	45,195	45,294	44,593	44,216
Total Undergraduate Professional incl. TST (Note 1)	6,880		7,168	8,008	8,015	8,125		110	117	8,237	8,324	8,195	8,214	8,228
TOTAL UNDERGRADUATE	41,620		47,878	50,778	51,906	52,715		809	1,937	53,367	53,518	53,489	52,807	52,444
St. George	2,904		3,246	4,197	4,583	4,613		30	415	4,778	4,935	5,111	5,252	5,343
UTM	168		180	242	265	255		(10)	13	263	277	279	280	279
UTSC				46	51	61		10	15	57	60	64	68	68
Professional Masters	3,071		3,426	4,485	4,898	4,929		30	444	5,098	5,272	5,453	5,600	5,690
Doctoral Stream Masters	2,512		2,585	2,826	2,788	2,749		(39)	(77)	2,784	2,782	2,765	2,766	2,764
Doctoral Stream PHD	4,498		4,771	5,606	5,762	5,789		26	182	5,876	5,979	6,066	6,157	6,133
TOTAL GRADUATE	10,082		10,782	12,917	13,449	13,466		17	549	13,758	14,033	14,285	14,523	14,587
St. George incl. TST	40,313		43,957	46,312	47,378	48,145		766	1,833	48,865	49,130	49,144	48,612	48,288
UTM	5,825		7,475	8,920	9,401	9,336		(65)	416	9,618	9,839	9,997	10,052	10,058
UTSC	5,564		7,228	8,463	8,575	8,700		125	237	8,641	8,583	8,633	8,665	8,685
TOTAL COMBINED FTEs	51,702		58,659	63,695	65,355	66,181		826	2,486	67,124	67,552	67,773	67,329	67,031

Note 1: Reporting of Additional Qualification enrolments ceased as of 2004-05.

Table 2A: Undergraduate Actual and Projected Enrolment by Division

Total UofT FTEs plus TST (Fall)

UNDERGRADUATE	2002-03 Actual	2004-05 Actual	2008-09 Actual	2009-10 Plan Jan/09	2009-10 Actual Nov/09	2009-10 Variance to Plan	2009-10 Variance to 2008-09	2010-11 Plan	2011-12 Projected	2012-13	2013-14	2014-15
St George, A&S	18,722	21,082	20,349	20,819	21,054	235	705	21,550	21,589	21,557	20,971	20,642
UTM	5,564	7,228	8,678	9,136	9,081	(55)	403	9,355	9,562	9,718	9,773	9,779
UTSC	5,657	7,295	8,417	8,525	8,639	114	222	8,584	8,523	8,569	8,597	8,617
Total Arts & Science	29,942	35,605	37,445	38,480	38,774	294	1,329	39,490	39,674	39,844	39,341	39,038
ApSc&Eng	3,848	4,056	4,261	4,295	4,592	297	332	4,411	4,255	4,155	4,009	3,954
PE&H	395	485	527	557	611	54	84	629	661	680	658	643
Music incl. ACP & DOP	453	442	447	457	499	42	52	498	503	513	484	480
TYP	102	122	91	102	113	11	22	101	102	101	102	101
Total First-Entry	34,741	40,710	42,769	43,891	44,589	698	1,820	45,129	45,195	45,294	44,593	44,216
Architecture (converted to Prof. Masters)	1											
Dentistry - DDS incl. DQP phase-in 2006-07	281	275	321	322	319	(3)	(2)	316	317	316	316	316
Dentistry - BSc, DQP up to 2005-06, Residents	65	63	13	13	14	1	1	13	13	13	13	13
Law	530	601	609	636	623	(13)	14	662	656	656	656	656
Medicine - MD	766	786	888	912	904	(8)	16	936	975	1,008	1,042	1,051
Medicine - Rad Sciences	331	382	409	420	385	(35)	(24)	401	409	416	416	416
Medicine - Physician Assistant								21	62	82	82	82
Medicine - OT & PT (converted to Prof. Masters)	63	1										
Medicine - Postgraduate Residents	1,864	2,099	2,539	2,539	2,687	148	148	2,687	2,687	2,687	2,687	2,687
Nursing incl. CNPP	186	313	314	316	325	9	11	340	337	347	352	352
OISE/UT - BEd/Tech Ed	1,666	1,278	1,327	1,239	1,295	57	(32)	1,273	1,273	1,070	1,052	1,057
Pharmacy - BSCP	588	769	1,011	1,017	1,020	3	9	1,014	1,016	1,020	1,018	1,018
Pharmacy - PharmD, Residents	10	47	64	54	56	2	(9)	53	56	56	56	56
Woodsworth Certificates	91	79	71	72	68	(4)	(3)	70	70	70	70	70
Total Undergraduate Professional	6,443	6,691	7,566	7,539	7,697	158	131	7,786	7,870	7,741	7,759	7,773
Total Toronto School of Theology (TST)	437	476	442	476	429	(47)	(14)	452	453	455	455	455
TOTAL UNDERGRADUATE	41,620	47,878	50,778	51,906	52,715	809	1,937	53,367	53,518	53,489	52,807	52,444

Table 2B: Undergraduate Enrolments with External and Affiliated Institutions

Total UofT FTEs plus TST (Fall)

UNDERGRADUATE	2000-01 Actual	%	2008-09 Actual	2009-10 Plan Jan/09	2009-10 Actual Nov/09	%	2009-10 Variance to Plan	2009-10 Variance to 2008-09	2010-11 Plan	2011-12 Projected	2012-13	2013-14	2014-15	%
CCIT			519	536	492		(44)	(27)	477	486	497	510	513	
Art & Art History	120		266	269	284		14	18	275	275	272	268	268	
Theatre & Drama	92		80	75	82		7	3	84	79	79	78	78	
UTM/Sheridan Programs	212		864	880	858		(23)	(7)	835	841	849	856	858	
Environmental Science & Technology			8	10	6		(3)	(2)	4	9	13	13	13	
Industrial Microbiology			36	31	31		(0)	(5)	31	23	24	24	24	
Journalism			105	99	104		5	(1)	98	103	110	110	110	
New Media			73	71	67		(4)	(6)	76	76	78	78	78	
Paramedicine			88	102	92		(10)	4	106	106	113	113	113	
UTSC/Centennial Programs			310	313	301		(12)	(9)	315	317	337	337	337	
Nuclear Medicine	48		119	117	108		(9)	(12)	111	102	102	102	102	
Radiation Therapy	124		174	190	159		(31)	(16)	175	194	208	208	208	
Radiological Technology	34		116	114	119		5	4	115	113	106	106	106	
Medicine/Michener Institute Radiation Science Programs	206		409	420	385		(35)	(24)	401	409	416	416	416	
Medicine/Michener/NOSM Physician Assistant (Note 4)									21	62	82	82	82	
Toronto School of Theology (TST)	436		442	476	429		(47)	(14)	452	453	455	455	455	
ENROLMENTS WITH EXTERNAL INSTITUTIONS (Note 2)	854	2.3%	2,025	2,089	1,972	3.7%	(117)	(53)	2,024	2,081	2,139	2,146	2,148	4.0%
A&S St. George/Seneca Liberal Arts Program (Note 1, 3)			3		7	0.0%		4						
Remainder who applied from Ontario CAATs (Note 3)	184	0.5%	554		556	1.1%		2						
Remaining students in UoT-only programs	36,080	97.2%	48,196		50,180	95.2%		1,984						
ENROLMENTS UofT-ONLY PROGRAMS	36,263	97.7%	48,752	49,817	50,742	96.3%	926	1,990	51,342	51,437	51,350	50,661	50,296	96.0%
TOTAL UNDERGRADUATE	37,117	100.0%	50,778	51,906	52,715	100.0%	809	1,937	53,367	53,518	53,489	52,807	52,444	100.0%

Note 1: Arts & Science St. George and Seneca College's Liberal Arts Program initiated a transfer pilot project as of 2008-09, although once accepted at UofT these students are not being tracked separately within UofT's enrolment and revenue projection models. After-the-fact actuals can be reported using the enrolment count files.

Note 2: 2,629 students generated the 1,972 FTEs reported for external and affiliated institutions in 2009-10.

Note 3: An additional 759 students totalling 562 FTEs in 2009-10 applied from Ontario Colleges of Applied Arts & Technology and then registered in UofT-only programs.

Note 4: The new Physician Assistant program starts in January 2010 so it will be included in reports for Fall 2010 onwards.

Table 3: Undergraduate Full-time New Intake/Year 1 Enrolments by Division

Fall Headcount Enrolments

UNDERGRADUATE	2002-03 Actual	2003-04 Actual (Note 2)	2004-05 Actual	2008-09 Actual	2009-10 Plan Jan/09	2009-10 Actual Nov/09	2009-10 Variance to Plan	2009-10 Variance to 2008-09	2010-11 Plan	2011-12 Projected	2012-13	2013-14	2014-15
St George, A&S	5,452	5,794	5,683	5,349	5,741	6,061	320	712	5,599	5,499	5,399	5,299	5,299
UTM	2,101	2,651	2,176	2,768	2,835	2,770	(65)	2	2,852	2,852	2,852	2,852	2,852
UTSC	2,138	2,739	2,420	2,461	2,484	2,498	14	37	2,484	2,484	2,484	2,484	2,484
Total Arts & Science (New Intake)	9,691	11,184	10,279	10,578	11,060	11,329	269	751	10,935	10,835	10,735	10,635	10,635
ApSc&Eng (Year 1)	1,035	1,214	1,073	1,115	1,130	1,206	76	91	1,099	1,070	1,030	1,030	1,030
PE&H (Year 1)	118	147	138	142	160	229	69	87	175	175	175	175	175
Music (Year 1)	114	117	115	98	123	151	28	53	115	115	115	115	115
TYP (All students)	73	66	67	51	62	64	2	13	62	62	62	62	62
Total First-Entry (Year 1/New Intake)	11,031	12,728	11,672	11,984	12,535	12,979	444	995	12,386	12,257	12,117	12,017	12,017
Dentistry - DDS incl. DQP as of 2006-07	72	67	69	91	95	94	(1)	3	94	94	94	94	94
Dentistry - BSc, DQP up to 2005-06, Residents	40	38	38	13	13	14	1	1	13	13	13	13	13
Law	180	180	180	191	195	196	1	5	196	196	196	196	196
Medicine MD	198	200	199	224	224	225	1	1	250	259	259	259	259
Medicine Radiation Sciences	132	132	134	130	130	123	(7)	(7)	130	130	130	130	130
Medicine Physician Assistant					Winter intake program starting in 2009-10 (Note 3)								
Nursing incl. CNPP	134	156	158	155	161	174	13	19	166	171	176	176	176
OISE/UT - BEd/Tech Ed	1,261	1,242	1,273	1,327	1,241	1,282	41	(45)	1,268	1,268	1,065	1,047	1,052
Pharmacy - BSCP	179	189	200	241	240	242	2	1	240	240	240	240	240
Pharmacy - PharmD, Residents	6	40	36	46	37	40	3	(6)	37	37	37	37	37
Woodsworth Certificates	17	36	43	33	35	37	2	4	35	35	35	35	35
Total Undergraduate Professional (Year 1)	2,219	2,280	2,330	2,451	2,371	2,427	56	(24)	2,429	2,443	2,245	2,227	2,232
TOTAL FULL-TIME YEAR 1/NEW INTAKE	13,250	15,008	14,002	14,435	14,906	15,406	500	971	14,815	14,700	14,362	14,244	14,249

Note 1: For direct-entry programs, the new intake numbers provided in the table include new intake into upper years. For professional programs, the table provides full-time Year 1 enrolment.

Note 2: 2003-04 was the primary year of accommodating the undergraduate "double cohort" from Ontario secondary schools.

Note 3: The Physician Assistant Education Program will admit students in the Winter. Its revised planned intake for 2009-10 is 21 rising to 42 for 2010-11 onwards.

Table 4A, Graduate Enrolment, FTE Distribution by Immigration Status

Fall Full-time Equivalent (FTE) Enrolments

	2002-03 Actual	2004-05 Actual	2008-09 Actual	2009-10 Plan Jan/09	2009-10 Actual Nov/09	2009-10 Variance to Plan	2009-10 Variance to 2008-09	2010-11 Plan	2011-12 Projected	2012-13	2013-14	2014-15
Domestic	8,667	9,086	11,224	11,737	11,735	(3)	511	12,051	12,316	12,507	12,679	12,709
International	1,414	1,696	1,693	1,712	1,732	20	38	1,707	1,718	1,778	1,844	1,879
Total Fall FTEs	10,082	10,782	12,917	13,449	13,466	17	549	13,758	14,033	14,285	14,523	14,587
Cumulative increase over 2002-03		700	2,836	3,367	3,385			3,676	3,952	4,203	4,441	4,506
Cumulative increase over 2004-05			2,136	2,667	2,685			2,976	3,252	3,503	3,741	3,806

Table 4B, Graduate Enrolment, FTE Distribution by Degree

	2002-03 Actual	2004-05 Actual	2008-09 Actual	2009-10 Plan Jan/09	2009-10 Actual Nov/09	2009-10 Variance to Plan	2009-10 Variance to 2008-09	2010-11 Plan	2011-12 Projected	2012-13	2013-14	2014-15
PhD	4,498	4,771	5,606	5,762	5,789	26	182	5,876	5,979	6,066	6,157	6,133
Doctoral Stream Masters	2,512	2,585	2,826	2,788	2,749	(39)	(77)	2,784	2,782	2,765	2,766	2,764
Professional Masters	3,071	3,426	4,485	4,898	4,929	30	444	5,098	5,272	5,453	5,600	5,690
Total Fall FTEs	10,082	10,782	12,917	13,449	13,466	17	549	13,758	14,033	14,285	14,523	14,587

Table 4C, Actual and Projected Graduate Enrolment by Division

Total Fall FTEs

GRADUATE	2002-03	2004-05	2008-09	2009-10	2009-10	2009-10	2009-10	2010-11	2011-12	2012-13	2013-14	2014-15
	Actual	Actual	Actual	Plan	Actual	Variance	Variance	Plan	Projected			
				Jan/09	Nov/09	to Plan	to 2008-09					
Total Graduate Enrolment												
APSE	1,214	1,226	1,354	1,418	1,478	60	124	1,464	1,471	1,490	1,497	1,496
Architecture	231	292	334	333	347	15	13	337	338	337	337	337
A&S-Humanities	1,078	1,141	1,307		1,290		(17)					
A&S-Social Sciences	663	735	1,006		1,051		46					
A&S-Physical Sciences	774	826	991		982		(8)					
A&S-Life Sciences	317	301	396		419		23					
A&S excl. UTM & UTSC PMAS	2,832	3,003	3,699	3,727	3,743	16	44	3,886	3,988	3,979	3,993	3,983
UTM PMAS	168	180	242	265	255	(10)	13	263	277	279	280	279
UTSC PMAS			46	51	61	10	15	57	60	64	68	68
Dentistry	101	110	118	120	120	0	2	124	125	125	124	124
Forestry	97	83	77	86	68	(18)	(9)	79	86	90	94	99
Information	231	304	420	486	481	(5)	61	503	479	512	537	541
Law	79	104	96	100	91	(9)	(5)	89	113	157	199	221
Management	571	727	964	1,079	1,049	(29)	85	1,070	1,141	1,229	1,314	1,367
Medicine excl. UTM	1,977	2,224	2,629	2,708	2,706	(2)	77	2,757	2,764	2,776	2,782	2,781
Music	133	115	209	195	197	2	(12)	210	214	214	206	204
Nursing	188	236	284	305	309	4	25	310	311	312	313	311
OISE	1,611	1,459	1,577	1,666	1,666	(1)	88	1,692	1,738	1,784	1,834	1,826
Pharmacy	73	103	124	142	118	(24)	(6)	126	136	140	143	139
Phys-Ed	38	39	43	49	47	(3)	3	49	51	53	58	59
Social Work	281	281	382	394	381	(14)	(2)	395	395	397	397	401
TST	258	296	319	326	350	24	31	349	349	348	349	353
Total Graduate Enrolment	10,082	10,782	12,917	13,449	13,466	17	549	13,758	14,033	14,285	14,523	14,587

Table 4D, Actual and Projected Graduate Enrolment by Division

Total Fall FTEs

GRADUATE	2002-03 Actual	2004-05 Actual	2008-09 Actual	2009-10 Plan Jan/09	2009-10 Actual Nov/09	2009-10 Variance to Plan	2009-10 Variance to 2008-09	2010-11 Plan	2011-12 Projected	2012-13	2013-14	2014-15
Professional Masters												
APSE	264	169	223	287	273	(14)	50	278	302	338	347	349
Architecture	231	292	334	333	347	15	13	337	338	337	337	337
A&S St. George PMAS	165	187	315	320	315	(5)	0	355	400	409	415	430
UTM PMAS	168	180	242	265	255	(10)	13	263	277	279	280	279
UTSC PMAS			46	51	61	10	15	57	60	64	68	68
Dentistry	65	70	68	71	74	3	6	74	73	70	70	71
Forestry	32	25	22	29	20	(9)	(2)	29	36	36	36	36
Information	198	272	384	448	447	(1)	64	469	443	457	467	467
Law	0	3	0	1	0	(1)	0	0	20	60	100	120
Management	506	654	893	1,010	974	(35)	81	1,000	1,071	1,154	1,234	1,284
Medicine excl. UTM	479	565	687	735	726	(8)	39	771	775	775	775	775
Music	63	59	83	72	77	5	(6)	86	93	94	94	94
Nursing	151	185	201	214	231	17	30	230	230	230	230	230
OISE	514	522	649	722	797	75	148	809	814	809	805	808
Pharmacy	0	0	1	1	0	(1)	(1)	0	0	0	0	0
Phys-Ed	0	1	0	0	0	0	0	0	0	0	0	0
Social Work	229	231	334	340	331	(10)	(4)	340	340	342	342	342
TST	7	4	4	2	1	(1)	(3)	1	1	1	1	1
Total Professional Masters	3,071	3,420	4,485	4,898	4,929	30	444	5,098	5,272	5,453	5,600	5,690

Table 4E, Actual and Projected Graduate Enrolment by Division

Total Fall FTEs

GRADUATE	2002-03 Actual	2004-05 Actual	2008-09 Actual	2009-10 Plan Jan/09	2009-10 Actual Nov/09	2009-10 Variance to Plan	2009-10 Variance to 2008-09	2010-11 Plan	2011-12 Projected	2012-13	2013-14	2014-15
Doctoral Stream Masters												
APSE	531	535	525	510	529	19	4	508	488	468	468	461
A&S-Humanities	274	314	358		316		(42)					
A&S-Social Sciences	200	226	300		295		(6)					
A&S-Physical Sciences	237	219	243		255		12					
A&S-Life Sciences	100	112	123		120		(3)					
A&S-All Campuses	811	870	1,024	992	986	(7)	(38)	1,059	1,081	1,081	1,081	1,081
Dentistry	15	13	19	23	23	0	4	26	25	24	24	23
Forestry	23	20	21	21	18	(3)	(3)	17	17	17	17	17
Law	39	51	57	59	49	(10)	(8)	48	48	48	48	48
Medicine	707	793	858	875	842	(33)	(16)	847	860	867	866	868
Music	33	16	36	25	20	(4)	(16)	23	23	22	22	22
Nursing	1											
OISE	247	158	163	151	143	(9)	(21)	117	104	102	99	103
Pharmacy	27	39	32	42	33	(9)	1	42	48	55	62	62
Phys-Ed	20	15	22	21	23	2	1	24	24	21	20	21
Social Work												
TST	59	80	68	69	83	14	14	73	65	61	59	59
Buffer						0	0					
Total Doctoral Stream Masters	2,512	2,591	2,826	2,788	2,749	(39)	(77)	2,784	2,782	2,765	2,766	2,764

Table 4F, Actual and Projected Graduate Enrolment by Division

Total Fall FTEs

GRADUATE	2002-03 Actual	2004-05 Actual	2008-09 Actual	2009-10 Plan Jan/09	2009-10 Actual Nov/09	2009-10 Variance to Plan	2009-10 Variance to 2008-09	2010-11 Plan	2011-12 Projected	2012-13	2013-14	2014-15
Doctoral Stream PhD												
APSE	419	522	606	621	676	55	70	677	681	684	682	686
A&S-Humanities	788	812	926		952		26					
A&S-Social Sciences	356	379	456		501		45					
A&S-Physical Sciences	499	567	706		691		(15)					
A&S-Life Sciences	213	188	272		298		26					
A&S-All Campuses	1,856	1,946	2,360	2,415	2,442	27	82	2,472	2,507	2,489	2,497	2,472
Dentistry	21	26	30	25	22	(3)	(8)	24	27	31	30	30
Forestry	42	38	34	36	30	(6)	(4)	33	33	37	41	46
Information	33	32	37	38	34	(4)	(2)	35	36	55	70	74
Law	40	49	39	40	42	2	3	41	45	49	51	53
Management	65	73	71	69	75	6	4	70	70	75	80	83
Medicine	791	866	1,084	1,099	1,138	39	55	1,138	1,129	1,134	1,141	1,138
Music	37	40	90	99	100	1	10	101	98	98	90	88
Nursing	37	51	83	91	78	(13)	(6)	80	81	82	83	81
OISE	849	780	766	793	726	(67)	(40)	766	821	874	929	915
Pharmacy	46	64	91	99	85	(14)	(6)	84	87	85	81	77
Phys-Ed	18	22	21	28	23	(5)	2	25	27	32	38	38
Social Work	52	50	48	54	50	(4)	2	55	55	55	55	59
TST	192	212	246	255	267	12	20	275	283	286	289	293
Total Doctoral Stream PhD	4,498	4,771	5,606	5,762	5,789	26	182	5,876	5,979	6,066	6,157	6,133

** Including Specials & Diplomas

Table 4G, Graduate Enrolment, Eligible (Fall plus Summer) FTE Enrolments

	2002-03 Actual	2004-05 Actual	Expansion Framework Phase 1 Approved Oct/06	2008-09 Actual	2009-10 Plan Jan/09	Expansion Phase 1 & 2 End State Target Feb/09	2009-10 Actual Nov/09	2009-10 Variance to Plan	2009-10 Variance to 2008-09	2009-10 Variance to End State Target	2010-11 Plan	2011-12 Projected	2012-13	Revised Expansion End State Target Feb/10	2013-14	2013-14 Variance to End State Target	2014-15
Masters	4,481	4,822	6,192	6,363	6,655	6,531	6,561	(94)	198	30	6,825	6,981	7,083	7,031	7,166	135	7,225
PhD	3,024	3,103	3,867	3,636	3,739	4,116	3,804	65	168	(312)	3,833	3,862	3,839	3,853	3,891	38	3,893
Fall & Summer EFTEs	7,505	7,925	10,059	9,999	10,394	10,647	10,365	(29)	366	(282)	10,658	10,843	10,922	10,884	11,057	173	11,119

Note 1: For funding purposes, Ministry definition of Masters includes Year 1 "PHD Qualifying Year" students and diploma/certificate programs.

Note 2: Nursing graduate eligible FTE enrolment growth was funded by the Ministry from a separate funding envelope prior to 2008-09

Masters	341	1,711	1,882	2,174	2,050	2,080		2,344	2,500	2,602	2,550	2,685		2,744
PhD	79	842	612	714	1,091	780		809	838	815	829	867		869
Cumulative increase over 2002-03	420	2,554	2,494	2,889	3,142	2,860		3,153	3,338	3,417	3,379	3,552		3,613
Masters		1,370	1,540	1,833	1,709	1,739		2,003	2,159	2,260	2,209	2,344		2,403
PhD		764	533	636	1,013	701		731	759	736	750	789		791
Cumulative increase over 2004-05		2,134	2,074	2,469	2,722	2,440		2,733	2,918	2,997	2,959	3,132		3,194

Table 4H, Graduate Enrolment, Eligible (Fall plus Summer) FTE Enrolments by Division

	2002-03 Actual	2004-05 Actual	Expansion Framework Phase 1 Approved Oct/06	2008-09 Actual	2009-10 Plan Jan/09	Expansion Phase 1 & 2 End State Target Feb/09	2009-10 Actual Nov/09	2009-10 Variance to Plan	2009-10 Variance to 2008-09	2009-10 Variance to End State Target	2010-11 Plan	2011-12 Projected	2012-13	Revised Expansion End State Target Feb/10	2013-14	2013-14 Variance to Revised End State Target	2014-15
APSE	576	503		597	631	617	643	13	46	26	637	634	659	662	662	0	662
Architecture	183	210		309	304	298	312	8	4	15	298	298	291	298	290	(8)	291
A&S excl. UTM & UTSC PMAS	691	781		1,179	1,150	1,194	1,107	(44)	(72)	(87)	1,230	1,297	1,300	1,269	1,302	33	1,315
UTM PMAS	131	138		210	219	210	216	(4)	5	5	226	240	240	240	240	(0)	241
UTSC PMAS				44	48	44	57	9	13	13	52	56	59	64	63	(0)	63
Dentistry	45	46		59	72	59	74	2	15	15	72	62	61	62	62	(0)	61
Forestry	48	33		30	37	30	29	(8)	(1)	(1)	41	46	46	30	46	16	46
Information	172	243		359	416	379	415	(1)	56	36	438	411	427	436	436	(0)	436
Law	19	28		43	46	43	36	(10)	(7)	(7)	33	53	93	65	133	68	153
Management	417	512		667	764	732	700	(64)	33	(32)	756	814	835	832	861	29	881
Medicine excl. UTM	1,005	1,167		1,365	1,413	1,395	1,355	(58)	(10)	(40)	1,404	1,430	1,430	1,425	1,430	5	1,429
Music	81	65		109	89	109	92	3	(17)	(17)	107	113	114	114	114	(0)	114
Nursing	133	170		203	214	203	230	16	27	27	228	228	228	228	228	0	228
OISE/UT	685	616		766	821	786	884	63	118	98	876	873	867	862	861	(0)	867
Pharmacy	24	36		40	48	50	33	(15)	(7)	(17)	42	48	54	60	60	(0)	60
Phys-Ed	18	13		15	13	15	16	4	1	1	19	17	14	15	14	(1)	15
Social Work	217	229		332	335	332	326	(9)	(6)	(6)	335	335	337	337	337	(0)	337
TST	39	33		36	36	36	36	(0)	(0)	0	31	27	27	33	26	(7)	27
Masters (MTCU definition)	4,481	4,822	6,192	6,363	6,655	6,531	6,561	(94)	198	30	6,825	6,981	7,083	7,031	7,166	135	7,225
APSE	260	335		376	399		422	23	46		448	455	451	430	431	0	430
A&S-All Campuses	1,071	1,075		1,380	1,403		1,477	74	97		1,452	1,454	1,385	1,358	1,373	16	1,380
Dentistry	12	17		15	17		14	(3)	(1)		15	16	17	18	18	0	18
Forestry	26	23		20	23		20	(3)	0		19	19	24	20	30	10	34
Information	21	24		21	21		20	(1)	(1)		18	16	32	45	44	(1)	44
Law	24	29		25	26		24	(2)	(1)		25	27	29	28	28	0	28
Management	30	42		39	35		39	4	0		35	33	35	36	36	0	37
Medicine	601	672		813	806		822	16	9		814	821	833	842	842	(0)	842
Music	28	24		80	86		90	4	10		88	82	66	63	63	0	62
Nursing	25	41		62	70		58	(11)	(4)		56	59	60	61	61	0	61
OISE/UT	702	563		561	582		546	(36)	(16)		583	599	624	679	680	0	679
Pharmacy	42	53		55	67		63	(3)	8		65	63	61	52	52	0	52
Phys-Ed	18	20		19	23		19	(3)	0		19	20	23	28	28	0	27
Social Work	34	39		37	39		42	3	5		42	43	46	47	47	(0)	46
TST	130	145		132	142		147	5	15		154	155	154	145	158	13	152
PhD (MTCU definition)	3,024	3,103	3,867	3,636	3,739	4,116	3,804	65	168	(312)	3,833	3,862	3,839	3,853	3,891	38	3,893
Fall & Summer EFTEs	7,505	7,925	10,059	9,999	10,394	10,647	10,365	(29)	366	(282)	10,658	10,843	10,922	10,884	11,057	173	11,119

Note 1: For funding purposes, Ministry definition of Masters includes Year 1 "PHD Qualifying Year" students and diploma/certificate programs.

TABLE 5A - Undergraduate and Graduate Intake by Geographic Origin*

	TOTAL HEADCOUNT					PERCENTAGE OF TOTAL HEADCOUNT			
	GTA Area	Other Ontario	Other Canada	Other Countries	Total	GTA Area	Other Ontario	Other Canada	Other Countries
2004-05									
Undergraduate	10,335	1,346	689	1,665	14,035	73.6%	9.6%	4.9%	11.9%
Graduate	2,273	451	318	579	3,621	62.8%	12.5%	8.8%	16.0%
Total Undergrad & Graduate	12,608	1,797	1,007	2,244	17,656	71.4%	10.2%	5.7%	12.7%

2008-09									
Undergraduate	9,674	1,482	857	2,171	14,184	68.2%	10.4%	6.0%	15.3%
Graduate	3,042	702	439	601	4,784	63.6%	14.7%	9.2%	12.6%
Total Undergrad & Graduate	12,716	2,184	1,296	2,772	18,968	67.0%	11.5%	6.8%	14.6%

2009-10									
Undergraduate	10,135	1,586	871	2,713	15,305	66.2%	10.4%	5.7%	17.7%
Graduate	2,761	823	597	679	4,860	56.8%	16.9%	12.3%	14.0%
Total Undergrad & Graduate	12,896	2,409	1,468	3,392	20,165	64.0%	11.9%	7.3%	16.8%

* Students' geographic origin determined using "Home province", "County of Residence" and "Admissions Applicant Type" fields in ROSI.

Notes: 1) Undergraduate excludes TST, Transitional Year Program, Academic Bridging Program and Woodsworth diploma & certificate programs.

Intake data is not available for Post-Graduate Medical Education.

2) Graduate data includes diplomas in Medicine and Music. Excludes TST.

3) 2004-05 was the second year of accommodating the "double cohort" from Ontario secondary schools.

4) Excludes Summer and Winter new intakes so programs that start especially in the summer such as DIFA, MBIotech, MMPA are understated.

5) Changes to the count program related to selection of permanent address information will contribute to lower GTA figures for 2009-10 onwards.

6) Other Countries includes all international students plus domestic students living abroad.

TABLE 5B - Undergraduate and Graduate Intake by Geographic Origin* By Faculty/Campus

	2004-05	PERCENTAGE OF TOTAL HEADCOUNT					2009-10	PERCENTAGE OF TOTAL HEADCOUNT			
	Head Count	GTA Area	Other Ontario	Other Canada	Other Countries		Head Count	GTA Area	Other Ontario	Other Canada	Other Countries
Undergraduate											
First Entry:											
Applied Science & Engineering	1,090	69.1%	7.8%	7.1%	16.1%	1,224	56.5%	6.9%	11.1%	25.5%	
Arts & Science											
St. George	6,358	70.0%	8.8%	5.2%	16.0%	6,610	63.2%	9.8%	5.9%	21.1%	
UTM	2,304	77.2%	9.5%	3.3%	10.0%	2,925	72.1%	8.6%	3.2%	16.1%	
UTSC	2,554	85.5%	4.3%	2.4%	7.8%	2,581	73.6%	4.4%	3.7%	18.3%	
Music	114	64.9%	15.8%	13.2%	6.1%	158	64.6%	19.6%	12.0%	3.8%	
Physical Education & Health	135	83.0%	12.6%	3.0%	1.5%	222	77.0%	16.7%	3.2%	3.2%	
Second Entry:											
Dentistry	72	75.0%	13.9%	11.1%	0.0%	70	54.3%	31.4%	14.3%	0.0%	
Law	171	42.7%	18.1%	22.8%	16.4%	182	42.9%	15.9%	28.0%	13.2%	
Medicine	206	47.6%	34.0%	18.4%	0.0%	220	54.5%	32.3%	12.7%	0.5%	
Nursing	113	47.8%	38.9%	10.6%	2.7%	110	48.2%	39.1%	8.2%	4.5%	
OISE	805	80.9%	16.6%	2.5%	0.0%	876	73.3%	22.9%	2.4%	1.4%	
Pharmacy	113	46.0%	44.2%	9.7%	0.0%	127	44.9%	43.3%	8.7%	3.1%	
Total Undergraduate	14,035	73.6%	9.6%	4.9%	11.9%	15,305	66.2%	10.4%	5.7%	17.7%	
Graduate											
Applied Science & Engineering	390	62.1%	8.5%	7.7%	21.8%	562	54.6%	12.6%	13.5%	19.2%	
Architecture, Landscape & Design	106	66.0%	2.8%	10.4%	20.8%	98	46.9%	18.4%	12.2%	22.4%	
Arts & Science excl. UTM & UTSC PMAS	1,063	53.6%	11.2%	10.8%	24.4%	1,331	46.7%	17.0%	16.8%	19.5%	
UTM Professional Masters	15	26.7%	13.3%	20.0%	40.0%	54	55.6%	11.1%	7.4%	25.9%	
UTSC Professional Masters						51	54.9%	25.5%	9.8%	9.8%	
Dentistry	16	75.0%	6.3%	6.3%	12.5%	20	60.0%	15.0%	15.0%	10.0%	
Forestry	23	34.8%	30.4%	8.7%	26.1%	20	50.0%	15.0%	15.0%	20.0%	
Information	135	68.1%	14.8%	7.4%	9.6%	285	59.6%	21.1%	11.9%	7.4%	
Law	58	31.0%	6.9%	10.3%	51.7%	56	39.3%	14.3%	17.9%	28.6%	
Management	308	64.3%	6.2%	5.8%	23.7%	445	58.7%	7.6%	9.0%	24.7%	
Medicine excl. UTM	730	67.7%	16.2%	10.0%	6.2%	789	60.8%	22.1%	9.6%	7.5%	
Music	40	45.0%	12.5%	22.5%	20.0%	77	46.8%	20.8%	27.3%	5.2%	
Nursing	114	70.2%	19.3%	9.6%	0.9%	137	65.7%	24.8%	8.0%	1.5%	
OISE	410	76.1%	12.9%	5.4%	5.6%	676	69.8%	15.8%	7.7%	6.7%	
Pharmacy	28	71.4%	17.9%	3.6%	7.1%	26	73.1%	7.7%	15.4%	3.8%	
Physical Education & Health	10	50.0%	30.0%	20.0%	0.0%	22	40.9%	27.3%	13.6%	18.2%	
Social Work	175	74.3%	21.1%	2.3%	2.3%	211	70.1%	19.9%	9.0%	0.9%	
Total Graduate	3,621	62.8%	12.5%	8.8%	16.0%	4,860	56.8%	16.9%	12.3%	14.0%	
Total Undergrad & Graduate	17,656	71.4%	10.2%	5.7%	12.7%	20,165	64.0%	11.9%	7.3%	16.8%	

* Students' geographic origin determined using "Home province", "County of Residence" and "Admissions Applicant Type" fields in ROSI.

Notes: 1) Undergraduate excludes TST, Transitional Year Program, Academic Bridging Program and Woodsworth diploma & certificate programs.

Intake data is not available for Post-Graduate Medical Education.

2) Graduate data includes diplomas in Medicine and Music. Excludes TST.

3) 2004-05 was the second year of accommodating the "double cohort" from Ontario secondary schools.

4) Excludes Summer and Winter new intakes so programs that start especially in the summer such as DIFA, MBIotech, MMPA are understated.

5) Changes to the count program related to selection of permanent address information will contribute to lower GTA figures for 2009-10 onwards.

6) Other Countries includes all international students plus domestic students living abroad.

TABLE 6

University of Toronto Total International Student Enrolment

	International Student Enrolment			International Undergraduate as a % of Total Undergraduate Enrolment	International Graduate as a % of Total Graduate Enrolment	Total International Enrolment as a % of Total Enrolment
	Undergrad	Graduate	Total			
1978-79	2,009	852	2,861	5.3	13.6	6.5
1979-80	2,078	806	2,884	5.3	13.1	6.3
1980-81	2,207	874	3,081	5.5	13.9	6.6
1981-82	2,979	984	3,963	7.1	15.3	8.2
1982-83	2,720	1,009	3,729	6.6	15.4	7.8
1983-84	2,432	865	3,297	5.7	12.7	6.7
1984-85	2,143	856	2,999	5.1	12.7	6.2
1985-86	1,627	788	2,415	4.0	11.7	5.0
1986-87	1,471	727	2,198	3.6	11.4	4.6
1987-88	1,308	783	2,091	3.1	11.5	4.3
1988-89	1,645	910	2,555	3.8	13.0	5.1
1989-90	1,915	1,010	2,925	4.4	14.1	5.7
1990-91	2,216	1,201	3,417	4.9	16.2	6.5
1991-92	2,445	1,249	3,694	5.3	16.0	6.8
1992-93	2,294	1,248	3,542	5.1	15.4	6.7
1993-94	2,043	1,142	3,185	4.6	14.1	6.0
1994-95	1,629	1,028	2,657	3.8	12.9	5.2
1995-96	1,330	863	2,193	3.1	10.9	4.3
1996-97	1,204	770	1,974	2.8	9.9	3.9
1997-98	1,142	755	1,897	2.7	9.9	3.8
1998-99	1,261	776	2,037	2.9	10.2	4.0
1999-00	1,572	831	2,403	3.6	10.7	4.6
2000-01	1,914	980	2,894	4.3	9.6	5.2
2001-02	2,388	1,150	3,538	5.1	10.7	6.1
2002-03	3,023	1,380	4,403	6.0	11.9	7.1
2003-04	3,535	1,570	5,105	6.4	13.2	7.6
2004-05	4,318	1,628	5,946	7.8	13.5	8.8
2005-06	4,982	1,659	6,641	8.6	13.9	9.5
2006-07	5,312	1,753	7,065	9.0	14.3	9.9
2007-08	5,655	1,725	7,380	9.5	12.8	10.1
2008-09	6,233	1,633	7,866	10.4	11.8	10.7
2009-10	6,832	1,650	8,482	11.1	11.4	11.2

Note: 1) Excludes TST undergraduate/graduate.

2) Beginning 2000-01, OISE graduate students are included.

TABLE 7						
University of Toronto Full-time Intake of International Students						
	All International Students			Annual Percent Change		
	Undergrad	Graduate	Total	Undergrad	Graduate	Total
1990-91	492	409	901			
1991-92	491	412	903	-0.2	0.7	0.2
1992-93	453	367	820	-7.7	-10.9	-9.2
1993-94	373	269	642	-17.7	-26.7	-21.7
1994-95	222	241	463	-40.5	-10.4	-27.9
1995-96	188	217	405	-15.3	-10.0	-12.5
1996-97	179	256	435	-4.8	18.0	7.4
1997-98	177	253	430	-1.1	-1.2	-1.1
1998-99	238	280	518	34.5	10.7	20.5
1999-00	444	363	807	86.6	29.6	55.8
2000-01	570	375	945	28.4	3.3	17.1
2001-02	734	418	1,152	28.8	11.5	21.9
2002-03	926	486	1,412	26.2	16.3	22.6
2003-04	1,064	542	1,606	14.9	11.5	13.7
2004-05	1,500	550	2,050	41.0	1.5	27.6
2005-06	1,641	594	2,235	9.4	8.0	9.0
2006-07	1,573	638	2,211	-4.1	7.4	-1.1
2007-08	1,712	561	2,273	8.8	-12.1	2.8
2008-09	1,971	588	2,559	15.1	4.8	12.6
2009-10	2,078	509	2,587	5.4	-13.4	1.1
Change 1990-2009	1,586	100	1,686	322.4	24.4	187.1

Notes: 1) Excludes TST undergraduate/graduate.

2) Beginning 2000-01, OISE graduate students are included.

3) Beginning 1996-97, the MTCU fee waiver program for international graduate students was eliminated and the number of categories of students exempt from full fees was reduced.

Table 8 - International Student Enrolment By Geographic Region

(Based on Country of Citizenship)

	TOTAL HEADCOUNT						PERCENTAGE OF TOTAL HEADCOUNT				
	Americas	Europe	Middle East	Asia	Africa and Oceana	Total	Americas	Europe	Middle East	Asia	Africa and Oceana
UNDERGRADUATE:							UNDERGRADUATE:				
1995-96	146	173	120	823	66	1,328	11.0%	13.0%	9.0%	62.0%	5.0%
1999-00	280	222	161	806	99	1,568	17.9%	14.2%	10.3%	51.4%	6.3%
2004-05	645	486	365	2,577	245	4,318	14.9%	11.3%	8.5%	59.7%	5.7%
2008-09	683	533	428	4,235	354	6,233	11.0%	8.6%	6.9%	67.9%	5.7%
2009-10	704	576	449	4,723	380	6,832	10.3%	8.4%	6.6%	69.1%	5.6%
GRADUATE:							GRADUATE:				
1995-96	301	181	121	207	52	862	34.9%	21.0%	14.0%	24.0%	6.0%
1999-00	321	214	69	236	59	899	35.7%	23.8%	7.7%	26.3%	6.6%
2004-05	441	313	186	613	75	1,628	27.1%	19.2%	11.4%	37.7%	4.6%
2008-09	479	260	237	601	56	1,633	29.3%	15.9%	14.5%	36.8%	3.4%
2009-10	475	261	257	609	48	1,650	28.8%	15.8%	15.6%	36.9%	2.9%
COMBINED:							COMBINED:				
1995-96	447	354	241	1,030	118	2,190	20.4%	16.2%	11.0%	47.0%	5.4%
1999-00	601	436	230	1,042	158	2,467	24.4%	17.7%	9.3%	42.2%	6.4%
2004-05	1,086	799	551	3,190	320	5,946	18.3%	13.4%	9.3%	53.6%	5.4%
2008-09	1,162	793	665	4,836	410	7,866	14.8%	10.1%	8.5%	61.5%	5.2%
2009-10	1,179	837	706	5,332	428	8,482	13.9%	9.9%	8.3%	62.9%	5.0%

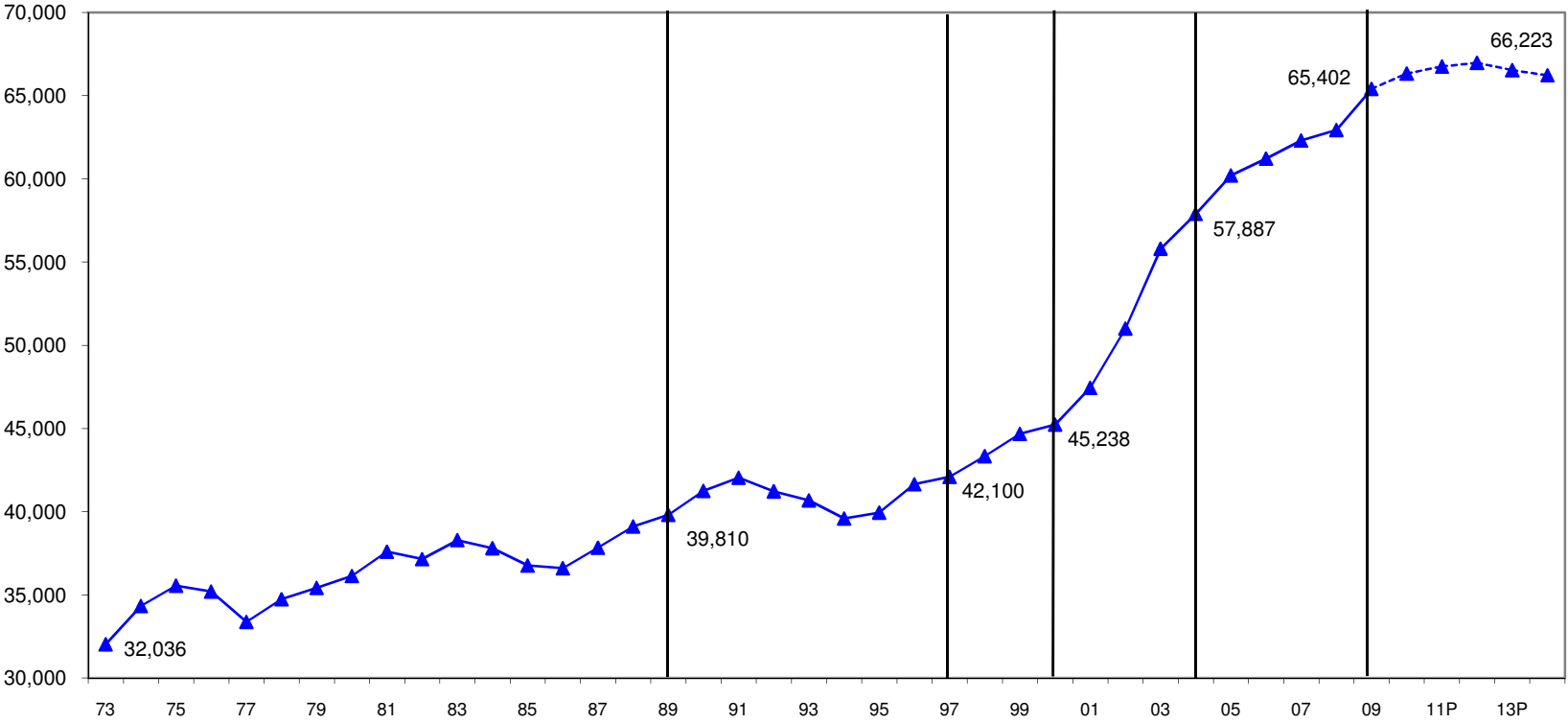
Table 9 - International Student Enrolment By Country of Citizenship

"TOP 15" COUNTRIES					GROWTH				
	Actual 1999-00	Actual 2004-05	Actual 2008-09	Actual 2009-10	2009 OVER 1999	Actual 1999-00	Actual 2004-05	Actual 2008-09	Actual 2009-10
UNDERGRADUATE:						UNDERGRADUATE:			
China (People's Republic)	176	950	1,849	2,387	1256%	11.2%	22.0%	29.7%	34.9%
South Korea	123	439	732	733	496%	7.8%	10.2%	11.7%	10.7%
U.S.A.	174	389	350	356	105%	11.1%	9.0%	5.6%	5.2%
India	56	202	296	293	423%	3.6%	4.7%	4.7%	4.3%
Hong Kong	102	160	291	276	171%	6.5%	3.7%	4.7%	4.0%
Pakistan	41	227	277	249	507%	2.6%	5.3%	4.4%	3.6%
Malaysia	31	37	115	153	394%	2.0%	0.9%	1.8%	2.2%
United Kingdom	53	100	137	139	162%	3.4%	2.3%	2.2%	2.0%
Saudi Arabia	63	94	114	136	116%	4.0%	2.2%	1.8%	2.0%
Taiwan	87	130	145	127	46%	5.5%	3.0%	2.3%	1.9%
Japan	51	117	138	118	131%	3.3%	2.7%	2.2%	1.7%
Nigeria	6	30	84	106	1667%	0.4%	0.7%	1.3%	1.6%
Bangladesh	65	90	94	103	58%	4.1%	2.1%	1.5%	1.5%
Australia	29	72	76	80	176%	1.8%	1.7%	1.2%	1.2%
Singapore	7	55	72	65	829%	0.4%	1.3%	1.2%	1.0%
Subtotal - Top 15 Countries as of 2009-10	1,064	3,092	4,770	5,321	400%	67.9%	71.6%	76.5%	77.9%
All remaining countries	504	1,226	1,463	1,511	200%	32.1%	28.4%	23.5%	22.1%
Total Undergraduate	1,568	4,318	6,233	6,832	336%	100.0%	100.0%	100.0%	100.0%
Number of Countries - Undergraduate	110	131	146	147	34%				
GRADUATE						GRADUATE:			
U.S.A.	222	283	346	359	62%	24.7%	17.4%	21.2%	21.8%
China (People's Republic)	86	302	250	255	197%	9.6%	18.6%	15.3%	15.5%
India	32	91	146	142	344%	3.6%	5.6%	8.9%	8.6%
Iran	30	79	100	126	320%	3.3%	4.9%	6.1%	7.6%
Germany	38	58	49	54	42%	4.2%	3.6%	3.0%	3.3%
South Korea	17	36	36	43	153%	1.9%	2.2%	2.2%	2.6%
United Kingdom	20	35	36	39	95%	2.2%	2.1%	2.2%	2.4%
Japan	41	43	46	38	-7%	4.6%	2.6%	2.8%	2.3%
Mexico	24	52	40	35	46%	2.7%	3.2%	2.4%	2.1%
Israel	21	38	31	29	38%	2.3%	2.3%	1.9%	1.8%
Turkey	3	23	30	26	767%	0.3%	1.4%	1.8%	1.6%
Greece	18	19	26	24	33%	2.0%	1.2%	1.6%	1.5%
Taiwan	4	17	19	22	450%	0.4%	1.0%	1.2%	1.3%
Bangladesh	1	16	22	21	2000%	0.1%	1.0%	1.3%	1.3%
Saudi Arabia	3	11	19	19	533%	0.3%	0.7%	1.2%	1.2%
Subtotal - Top 15 Countries as of 2009-10	560	1,103	1,196	1,232	120%	62.3%	67.8%	73.2%	74.7%
All remaining countries	339	525	437	418	23%	37.7%	32.2%	26.8%	25.3%
Total Graduate	899	1,628	1,633	1,650	84%	100.0%	100.0%	100.0%	100.0%
Number of Countries - Graduate	103	102	115	111	8%				

Table 10: Total Actual and Projected FTE Enrolments: Domestic/International Mix

Total UofT FTEs incl. TST (Fall)	2002-03	2004-05	2008-09	2009-10	2009-10	2009-10	2009-10	2010-11	2011-12	2012-13	2013-14	2014-15
	Actual	Actual	Actual	Plan Jan/09	Actual Nov/09	Variance to Plan	Variance to 2008-09	Plan	Projected			
Undergraduate - Domestic	38,901	43,980	45,336	46,191	46,698	507	1,362	47,037	46,951	46,723	45,912	45,420
Undergraduate - International	2,719	3,898	5,442	5,715	6,016	301	574	6,330	6,567	6,766	6,894	7,024
TOTAL UNDERGRADUATE	41,620	47,878	50,778	51,906	52,715	809	1,937	53,367	53,518	53,489	52,807	52,444
Graduate - Domestic	8,667	9,086	11,224	11,737	11,735	(3)	511	12,051	12,316	12,507	12,679	12,709
Graduate - International	1,414	1,696	1,693	1,712	1,732	20	38	1,707	1,718	1,778	1,844	1,879
TOTAL GRADUATE	10,082	10,782	12,917	13,449	13,466	17	549	13,758	14,033	14,285	14,523	14,587
Total - Domestic	47,568	53,066	56,560	57,928	58,433	505	1,873	59,088	59,267	59,230	58,591	58,129
Total - International	4,133	5,594	7,135	7,427	7,748	321	613	8,036	8,285	8,543	8,738	8,902
TOTAL COMBINED FTEs	51,702	58,659	63,695	65,355	66,181	826	2,485	67,124	67,552	67,773	67,329	67,031
% International - Undergraduate	6.5%	8.1%	10.7%	11.0%	11.4%			11.9%	12.3%	12.6%	13.1%	13.4%
% International - Graduate	14.0%	15.7%	13.1%	12.7%	12.9%			12.4%	12.2%	12.4%	12.7%	12.9%
% International - Combined	8.0%	9.5%	11.2%	11.4%	11.7%			12.0%	12.3%	12.6%	13.0%	13.3%

**Chart 1: FTE Enrolment at the University of Toronto
1973-74 to 2014-15**



1989-90 to 2000-01 Enrolment Corridor Funding
 1998-99 to 2000-01 Expansion Funding in selected areas [Access to Opportunities Program (ATOP), BED, and MD]
 2001-02 to 2004-05 Undergraduate Expansion including accommodation of the Ontario double cohort; Limited graduate expansion
 2005-06 onwards: Continued undergraduate growth and significant graduate expansion

Note: FTE Enrolment excludes TST

Chart 2: Entering Grade Averages , Arts & Science by Campus

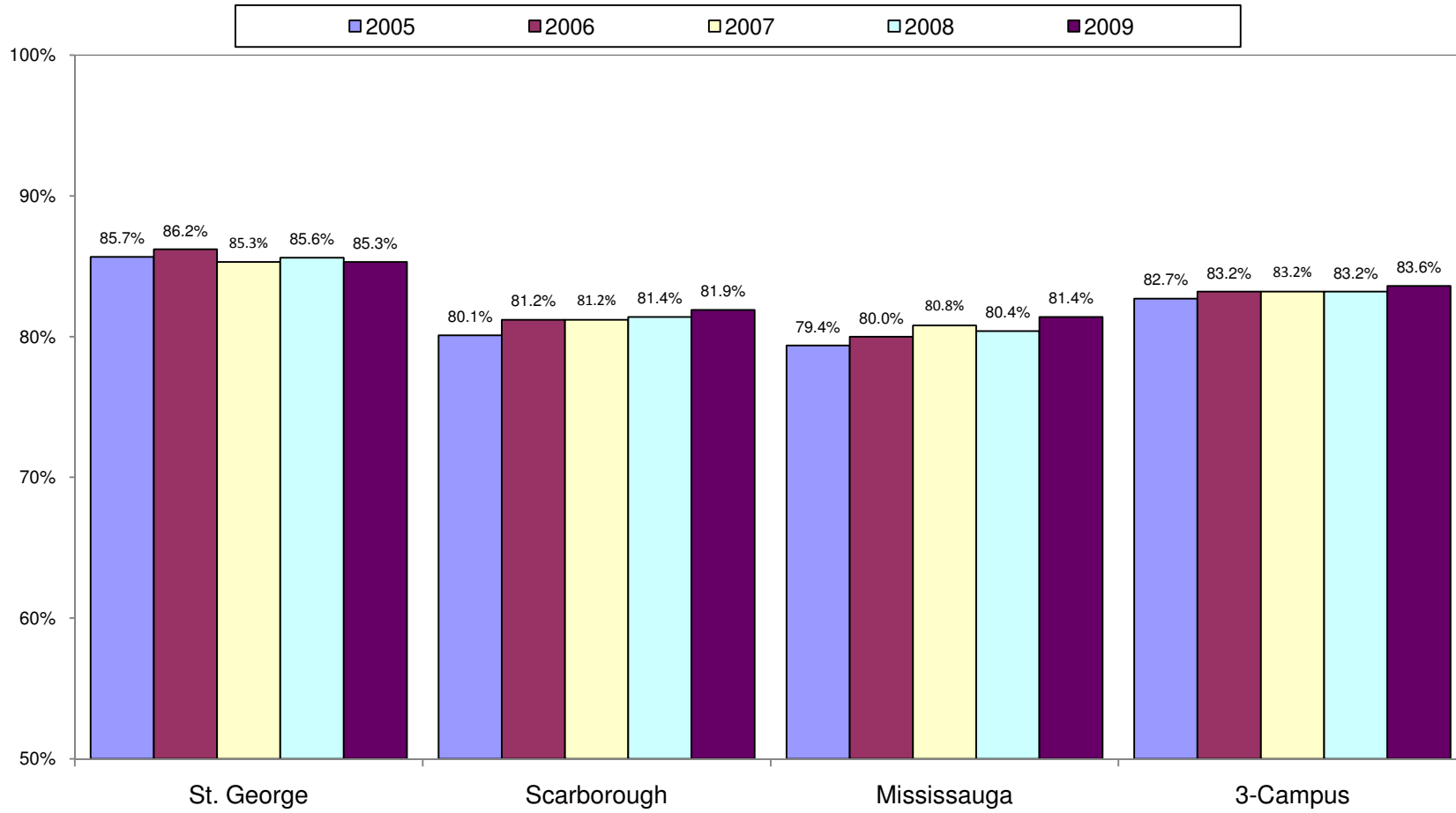


Chart 3: Graduate Enrolment by Degree 1997-98 TO 2014-15

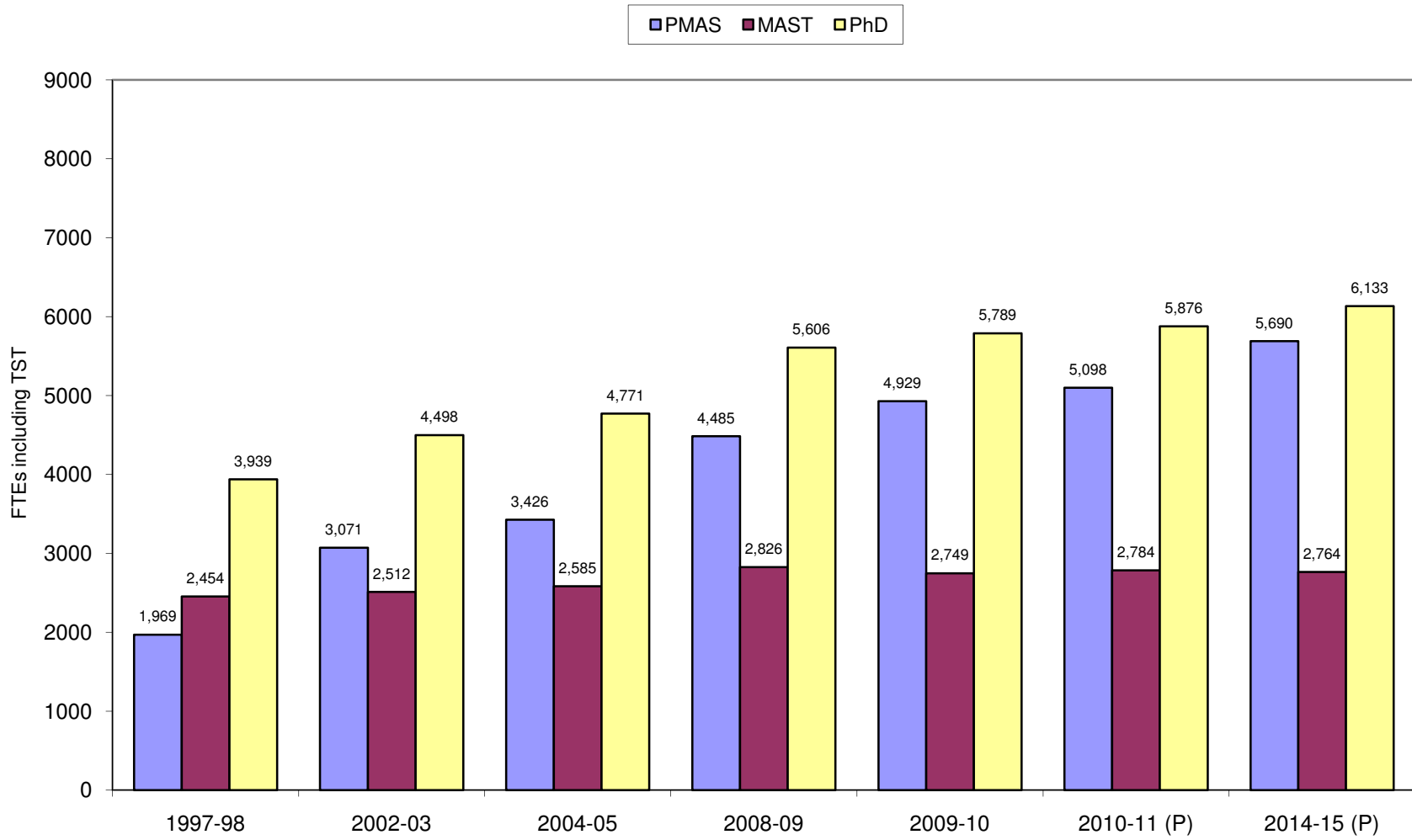
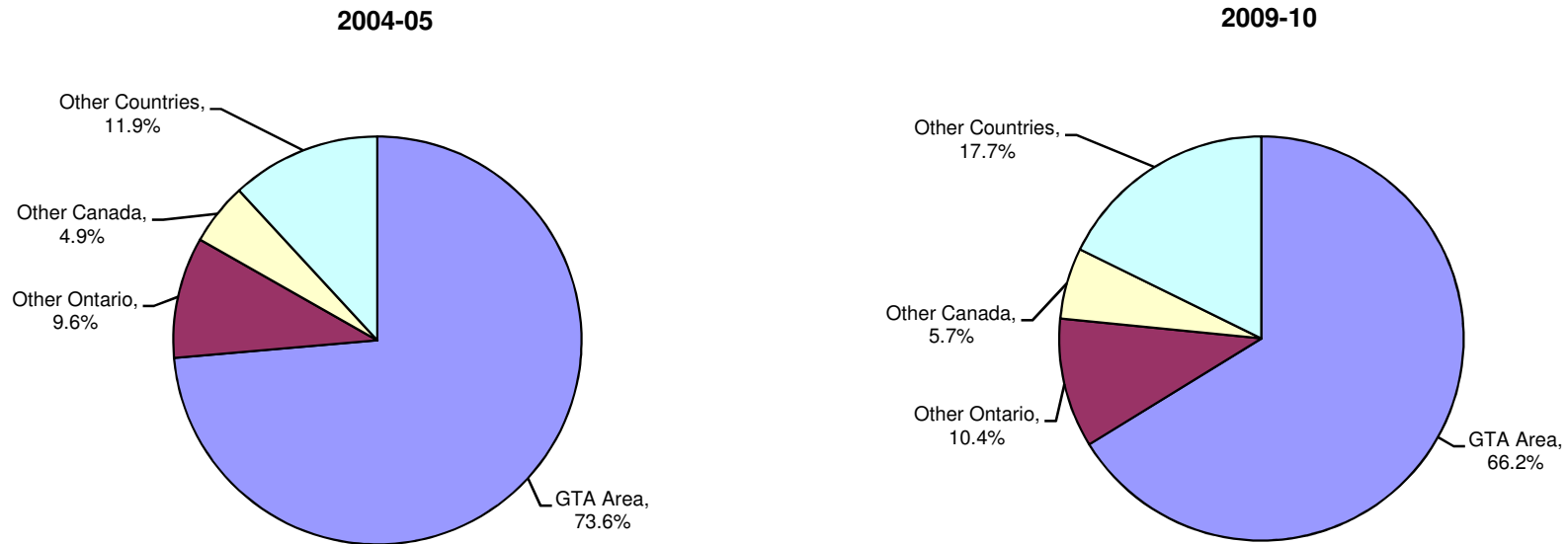


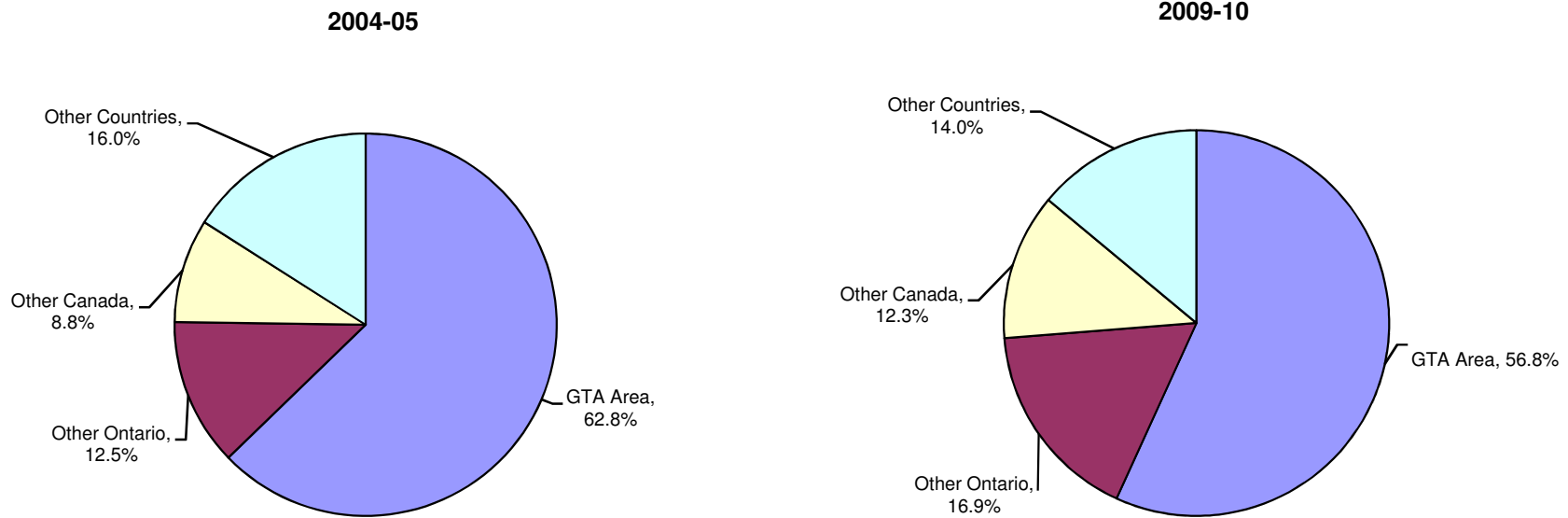
Chart 4A: Undergraduate Intake by Geographic Origin*



* Students' geographic origin determined using "Home province", "County of Residence" and "Admissions Applicant Type" fields in ROSI.

- Notes:
- 1) Undergraduate Excludes TST, Transitional Year Program, Academic Bridging Program and Woodsworth diploma & certificate programs. Intake data is not available for Post-Graduate Medical Education.
 - 2) 2004-05 was the second year of accommodating the "double cohort" from Ontario secondary schools.
 - 3) Changes to the count program related to selection of permanent address information will contribute to lower GTA figures for 2009-10 onwards.
 - 4) Other Countries includes all international students plus domestic students living abroad.

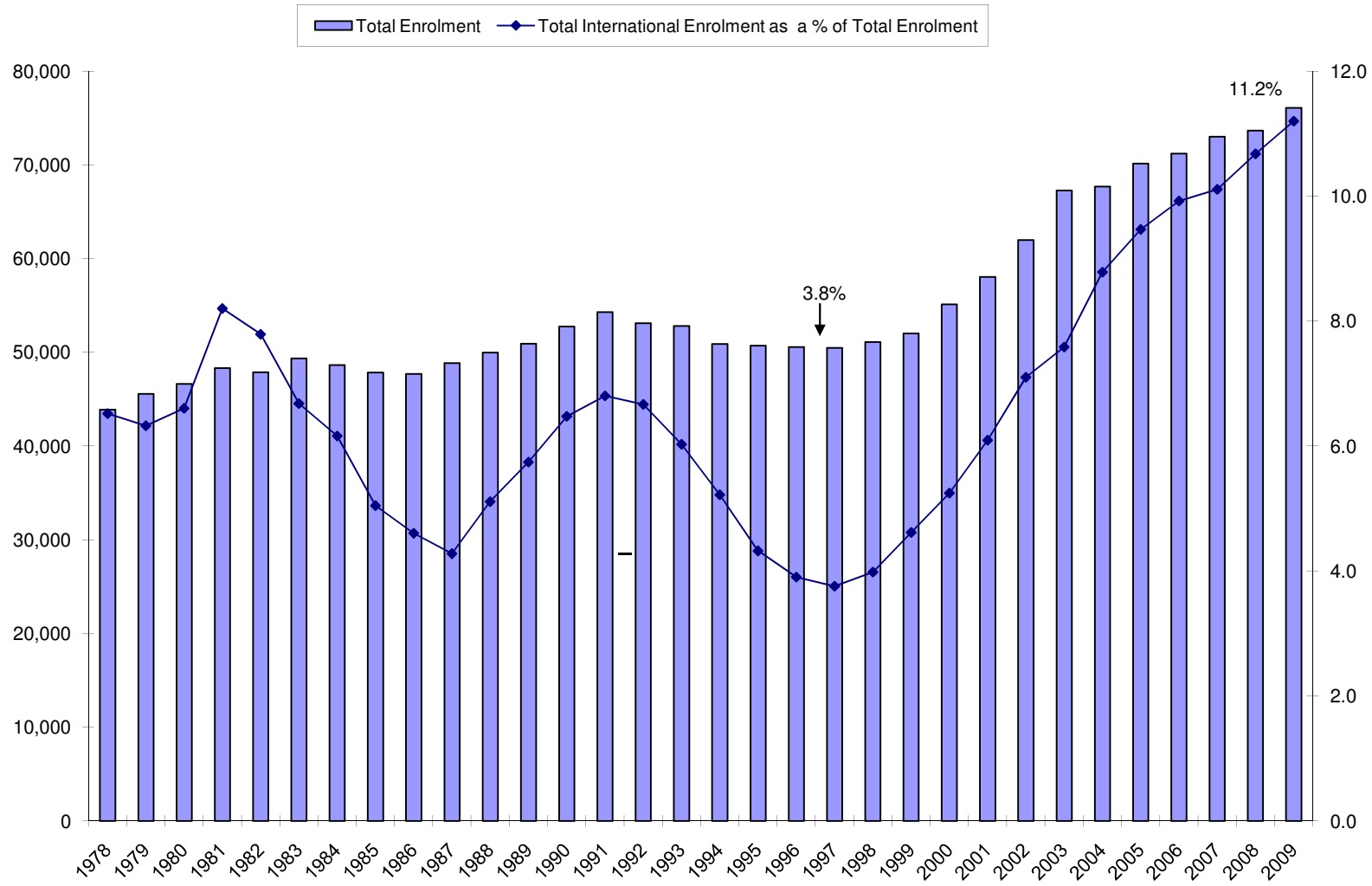
Chart 4B: Graduate Intake by Geographic Origin*



* Students' geographic origin determined using "Home province", "County of Residence" and "Admissions Applicant Type" fields in ROSI.

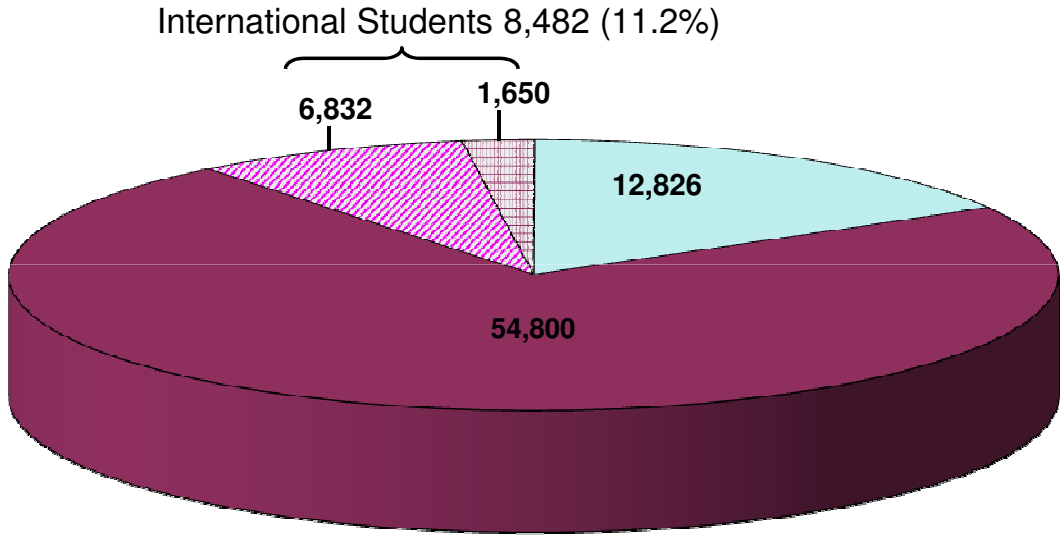
- Notes:
- 1) Graduate data includes diplomas in Medicine and Music. Excludes TST.
 - 2) Excludes Summer and Winter new intakes so programs that start especially in the summer such as DIFA, MBiotech, MMPA are understated.
 - 3) Changes to the count program related to selection of permanent address information will contribute to lower GTA figures for 2009-10 onwards.
 - 4) Other Countries includes all international students plus domestic students living abroad.

Chart 5A: Total Enrolment and Proportion International Enrolment: 1978-79 to 2009-10



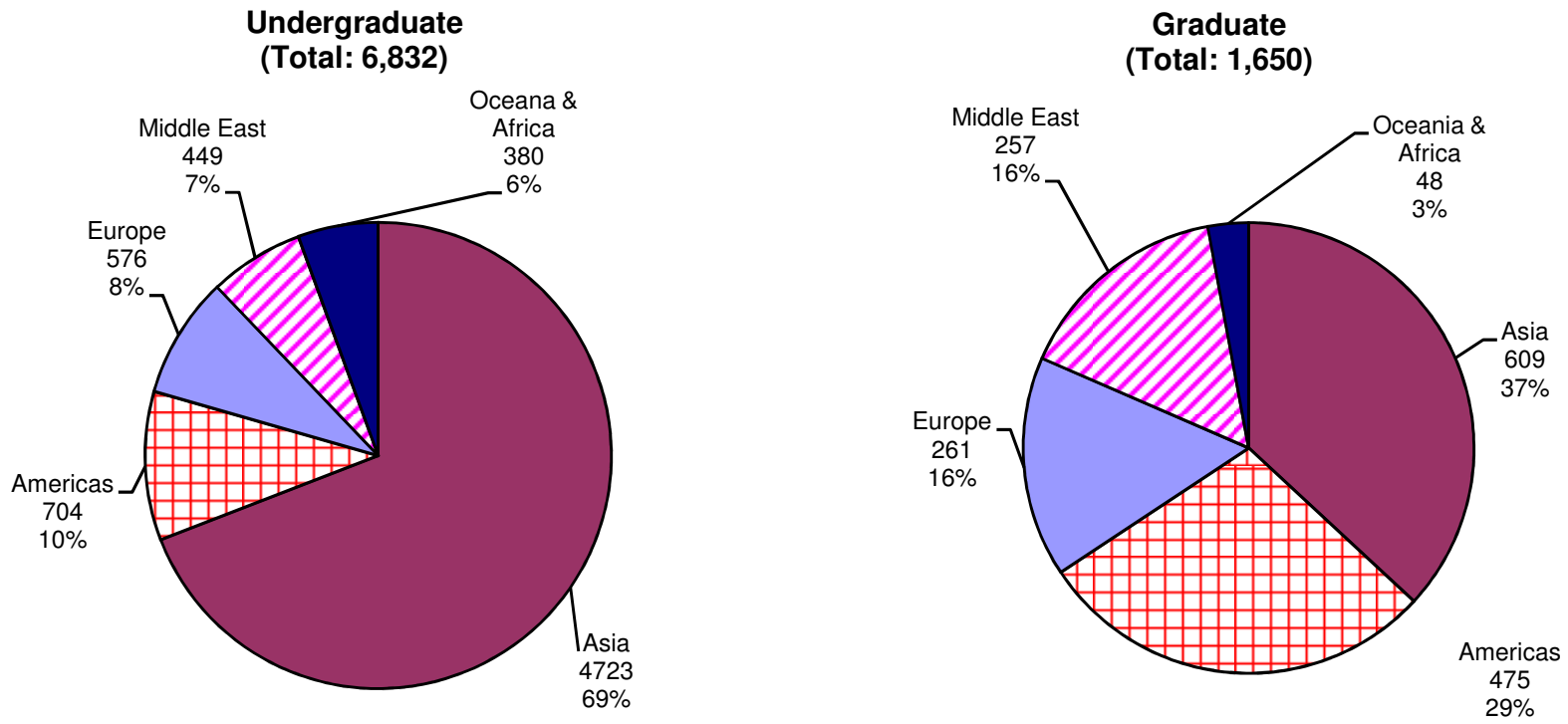
Note: Data excludes TST enrolments.

**Chart 5B: Domestic and International Student Enrolment
2009-10**



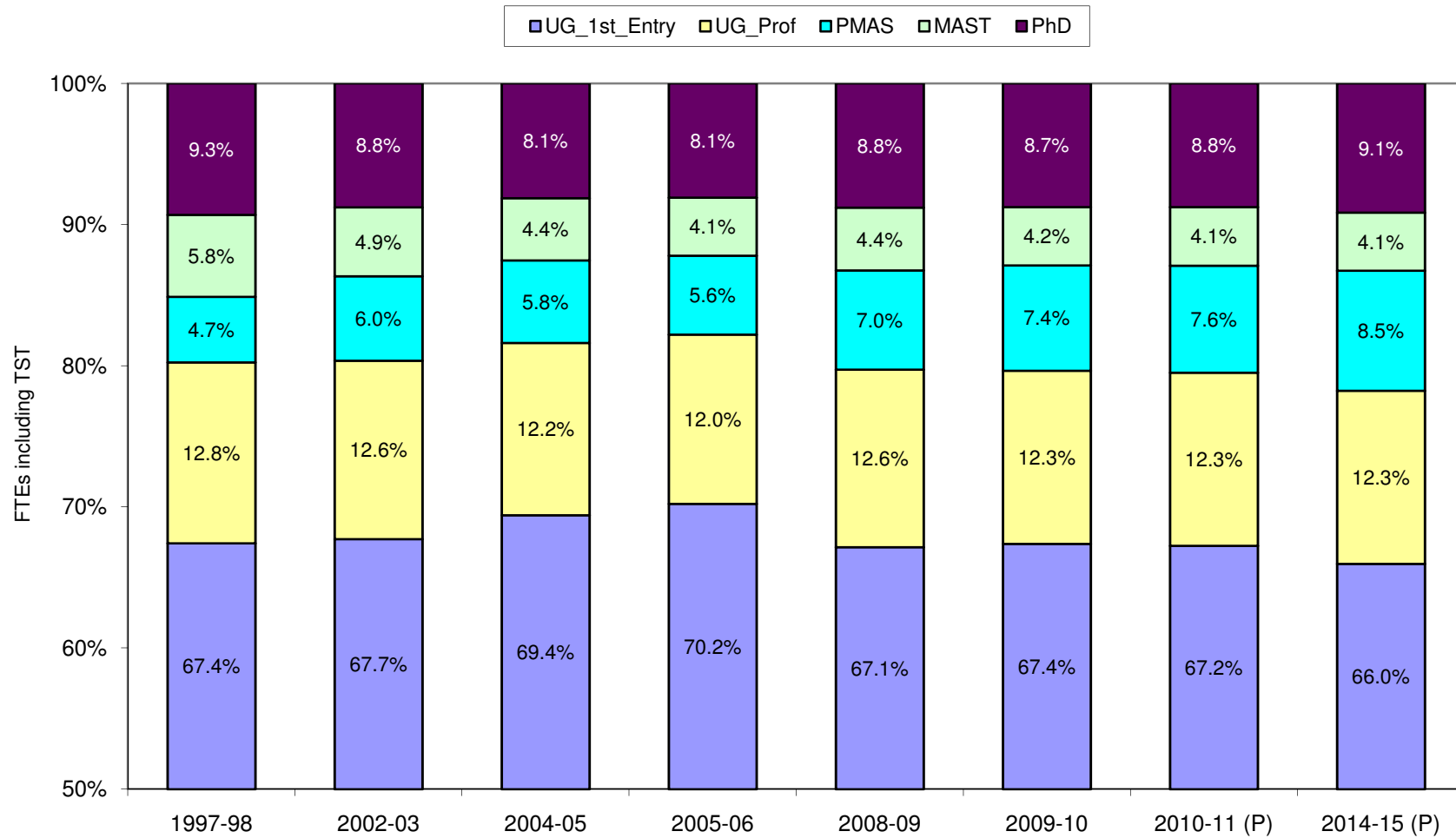
Note: Data excludes TST enrolments.

CHART 6: 2009-10 INTERNATIONAL STUDENTS BY GEOGRAPHIC REGION



Note: Geographic Region determined using "Country of Citizenship" field in ROSI.

Chart 7: Enrolment Balance 1997-98 TO 2014-15



Note: Includes TST. OISE graduate students included as of 2000-01. P = Projected. Architecture (98-99), and OT/PT (2001-02) programs converted to Professional Masters programs. Additional Qualification FTEs in 97-98 and 2002-03 excluded to provide a consistent time series.